

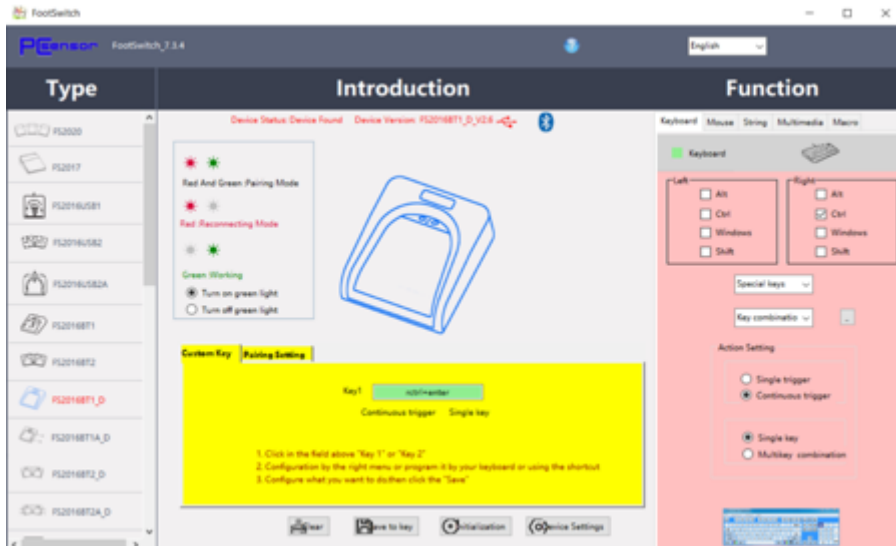
WIRELESS FOOTSWITCH CONNECTION

MANUAL



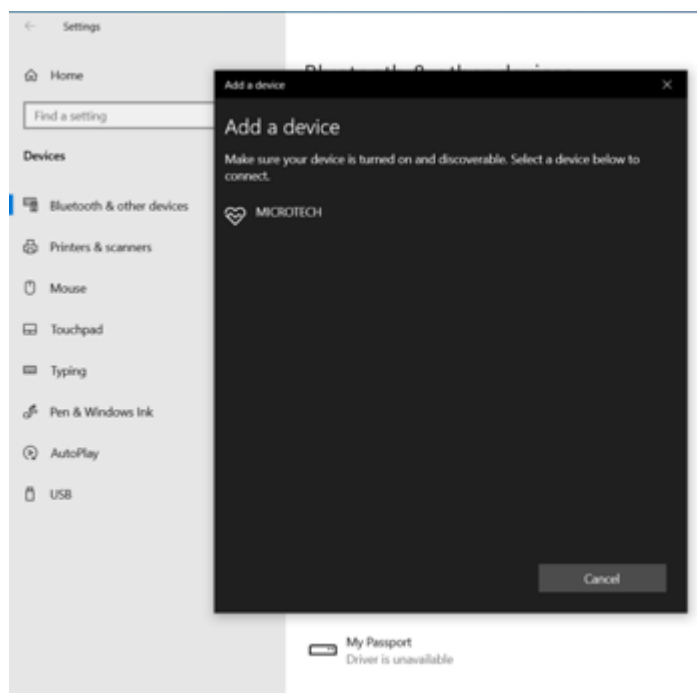
FOOTSWITCH SETTING

1. Install the actual software for setting Footswitch from USB drive with MDS v.5.0
2. To setup Footswitch connection - connect Footswitch to PC using USB cables (from set) and run installed Foot switch software
3. On “Custom Key” tab necessary to hold **Ctrl+Enter** keys at the same time.
4. Click “Save to key” to complete the setting.



CONNECTION

1. It's possible to use USB or Wireless footswitch connection
 2. To activate Wireless Footswitch connection - add new Bluetooth device in Windows system and pair.
 3. Once connected it, it will be works for your device hands-free.
- Note: Red Led: Reconnect status
 Green Light: Working status
 Red & Green :Pairing mode
4. Launch MDS App and save measurements values by bushing the Foot switch pedal



ENERGY SAVING MODE

- 1) Foot pedal switch will enter into sleep mode if there is no operation or disconnection for 10 minutes to save energy.
- 2) For activating your sleeping ,just press pedal to wake it up and reconnect automatically with the previously paired device.

SPECIFICATION

Single Pedal Size: 5.55»x5.15»x1.38» / 141x131x35mm

Weight: 8.46oz (240g)

Length of the USB cable: 1.5M/4.9FT

Battery: 2x AA batteries



MICROTECH

innovative measuring instruments

61001, Kharkiv, Ukraine, str. Rustaveli, 39

tel.: +38 (057) 739-03-50

www.microtech.ua

tool@microtech.ua

Change without prior notice

